

BULLBAR FITTING INSTRUCTIONS

TO SUIT: ISUZU NPS 300 4X4 WINCH BULLBAR 2008+

PART NUMBER: B3IS4458SY

Step 1.

Park the vehicle on level ground and apply the hand brake.

Check installation hardware and read fitting instructions before commencing.



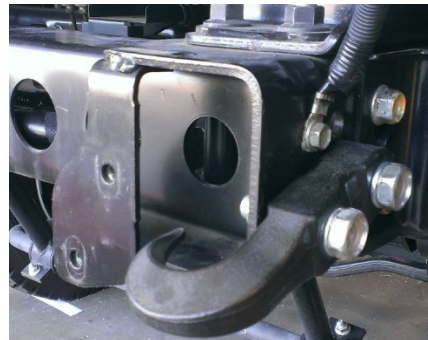
Step 2.

Remove four bolts retaining the bumper bar.
Discard the bumper and bolts.



Step 3.

Remove the earth straps, retain fastener.
Remove and discard the tow hook and fasteners.



Step 4.

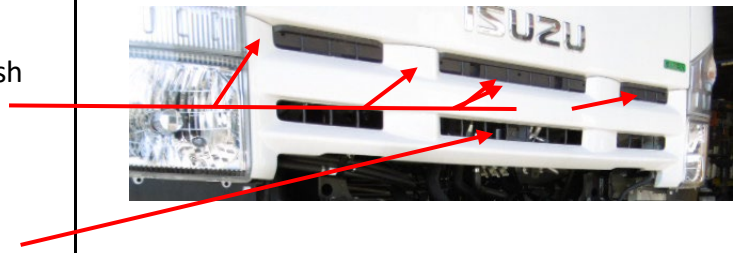
Re-locate the horn to under the front cross member using the original fastener.



Step 5.

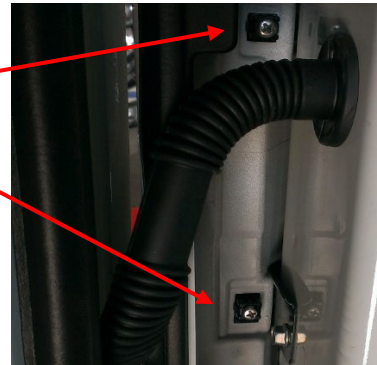
Release the screw from the centre and gently push down 5 clips to remove the grill.
Retain grill and fasteners.

Remove and retain screw



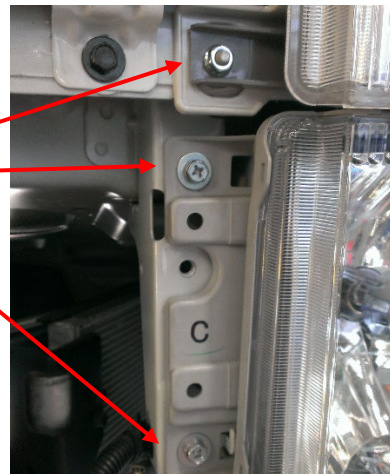
Step 6.

Release 2 screws from the indicator housing, open each door to gain access to the screws inside each door opening, the screws will remain in the vehicle body.



Step 7.

Release and retain the rubber flap below the headlight.
Release the bolts retaining the indicator and headlight each side, retain the fasteners for re-fitting.
Support the headlight and locate the wiring harness at the rear of the headlight assembly and release the connector.



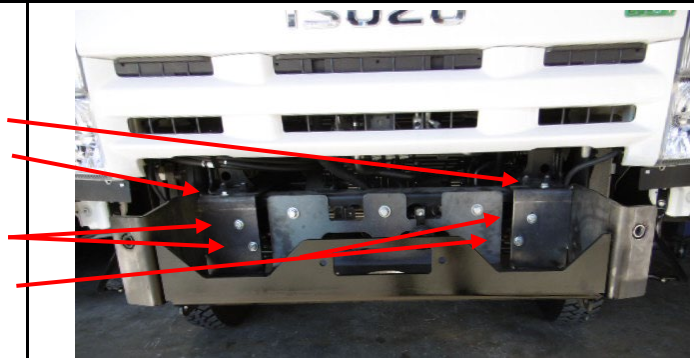
Step 8.

Connect the supplied indicator wiring harness extension into the light then the vehicle harness to the extension connector.
Replace the indicators and headlights, fasten the original fastener, replace the rubber flaps below the headlights.
Replace the grill using the original fasteners.



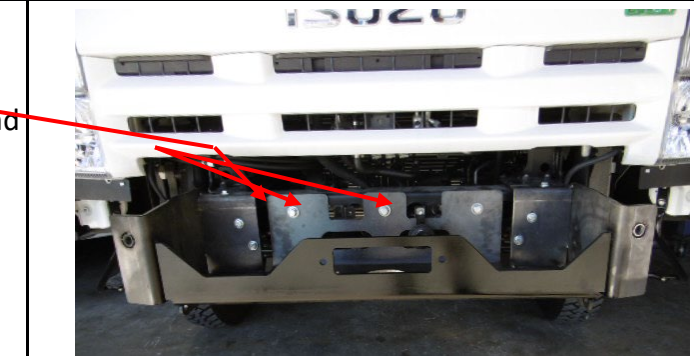
Step 9a.

Position the winch frame on the vehicle chassis, fasten lightly using M10 x 1.25 x 35 bolts, flat, spring washers and nuts on the top each side. fasten lightly using M10 x 1.25 x 35 bolts, flat, spring washers into the vehicle captive nuts.



Step 9b.

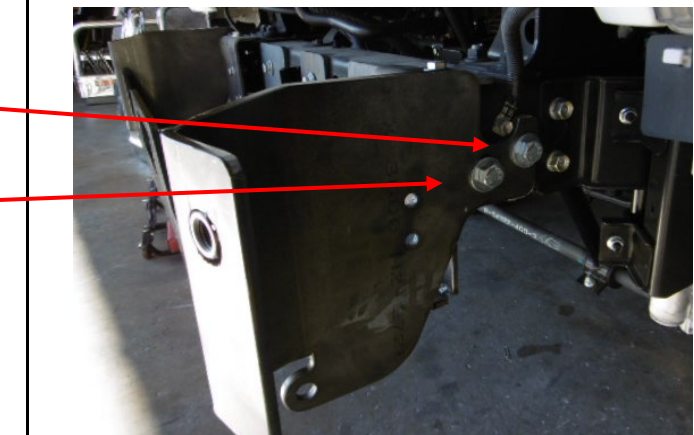
Fasten lightly using 3- M12 x 1.25 x 50 bolts, 75 x 75 x 6mm backing plates, flat, spring washers and nuts across the rear of the winch frame.



Step 10.

Fasten passenger side chassis mount lightly using M14 x 1.5 x 50 bolt, flat and spring washer into the vehicle captive nut on the rear hole and M14 x 1.5 x 50 flat, spring washer and nut on front hole.

Re-attach the earth strap using the original fastener.



Step 11.

Fasten lightly driver side mount using M12 x 1.25 x 50 bolt, flat, spring washer and nut.

Re-attach earth strap using M8 x 1.25 x 30 bolt, flat and spring washer.

Tighten all chassis mount fasteners fully.

Note: Winch fitment should be done at this point, refer to the winch manufacturers fitting instructions.

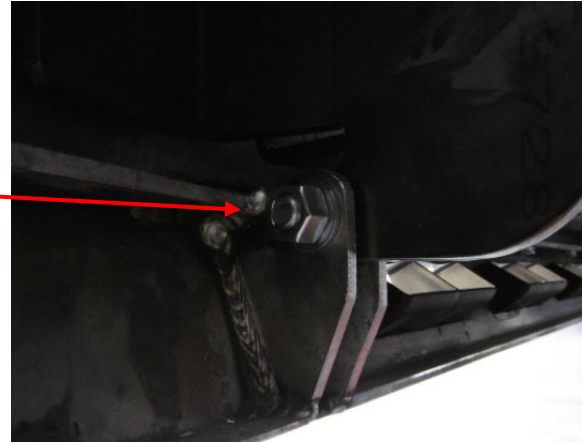


Step 12.

Fit the bullbar to the chassis mounts, fasten lightly using the eyebolts.

Align the hinge mounts and fasten using 9/16" x 2-1/2" UNC hinge bolts, flat, spring and nyloc nuts. Tighten the hinge bolts until the nut and washer touch the alloy only.

Note: Do not over tighten hinge bolts. Bolts need to touch alloy only.



Step 13.

Connect the indicator extension harnesses to the bullbar indicators.

Rotate the bullbar up and fasten using the eyebolts, fully tighten the eyebolts.

Fasten the hinged number plate bracket to the front face of the bullbar directly above the fairlead cutout. Check that all fasteners are fully tightened.

Check the operation of all lights.



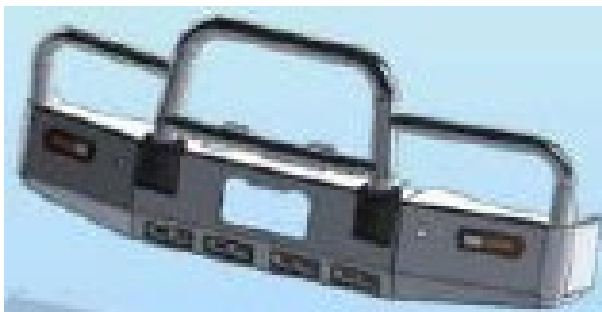
FITTING KIT

1 – Chassis mount / Winch Frame Assembly	3 – M14 Flat washers
3 – Backing plates (75 x 75 x 8mm FMS)	3 – M14 Spring washers
1 – Winch control box support bracket	1 – M8 x 1.25 x 30mm hex bolt
1 – Large Hinged Number plate racket assembly	1 – M8 Flat washer
8 – M10 x 1.25 x 35mm hex bolts	1 – M8 Spring washer
4 – M10 x 1.25 nuts	2 – M6 x 1.0 x 20 hex bolts (For number plate mount assembly)
12 – M10 H/D Flat washers	2 – M6 x 1.0 Nyloc nuts (For number plate mount assembly)
8 – M10 Spring washers	2 – M6 flat washers
4 – M12 x 1.25 x 50mm hex bolt	1 – Pair Indicator / Park lights (ICLED104BLK)
8 – M12 H/D Flat washer	6 – Scotch locks
4 - M12 Spring washer	2 – 700mm length single core wire
4 – M12 x 1.25 nuts	2 – Straight through crimp joiners
2 – M14 x 1.5 x 50mm hex bolts	4 – Long cable ties
1 – M14 x 1.5 nut	1 – Cab Tilt sticker

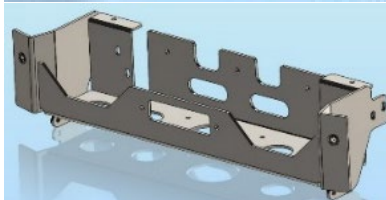
Fitted to bullbar

2 – 9/16 x 2 ½" UNC hex bolts.
2 – 9/16 UNC nyloc nuts
4 – 9/16 Flat washers
2 – ¾ Eyebolts and washers

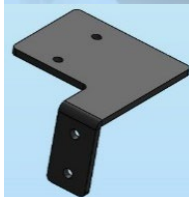
1 – Bullbar assembly



1 – Chassis mount assembly



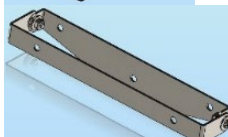
1 – Winch control box support bracket



3 – 75 x 75 x 6mm Flat Backing plates



1 – Large Hinged Number plate bracket assembly





**WORLD'S BEST
ALLOY BULLBARS**

**Lighter
Stronger
Better!**

A: 29 Snook St Clontarf QLD 4019

A: PO Box 122 Margate QLD 4019

P: 07 3897 5700

F: 07 3283 1168

E: info@ecb.com.au

W: ecb.com.au

W: customalloy.com.au





**Lighter
Stronger
Better!**

A: 29 Snook St Clontarf QLD 4019
A: PO Box 122 Margate QLD 4019
P: 07 3897 5700
F: 07 3283 1168
E: info@ecb.com.au
W: ecb.com.au
W: customalloy.com.au



DESPATCH CHECKLIST

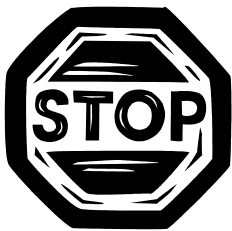
B3IS4458SY

NPS 4X4 WINCH BULLBAR 2008+

Work Order #	
Finish:	
Transport:	
Due Date:	

- OC.....1 – Steel Mount / Winch Frame.
- BK.....3 – Steel Backing Plates (75 x 75 x 8mm)
- BK.....1 – Control box bracket
- BK.....1 – Large hinged numberplate bracket.
- BK.....1 – Bolt Kit
- OC.....2 – Overriders – (plastic ECB Blank)
- OC.....4 – 6mm air vents
- WR.....1 - Chassis Mounting Bracket - **Fitted to Bar**
- WR..... 2 – 9/16 x 2 ½ hinge bolts – **Fitted to Bar**
- WR.....2 – Eye Bolts (3/4 UNC ZP) – **Fitted to Bar**
- WR.....2 – Overriders – **Fitted to Bar**
- WR..... 4 – 6mm air vents – **Fitted to Bar**

_____/_____
 Wrapper's initials / Checker initials



Is this product “the best it can be” Yes
If NO fix before continuing

All parts checked and completed by:

Nut and bolts: _____ Date ___/___/___

Order control: _____ Date ___/___/___

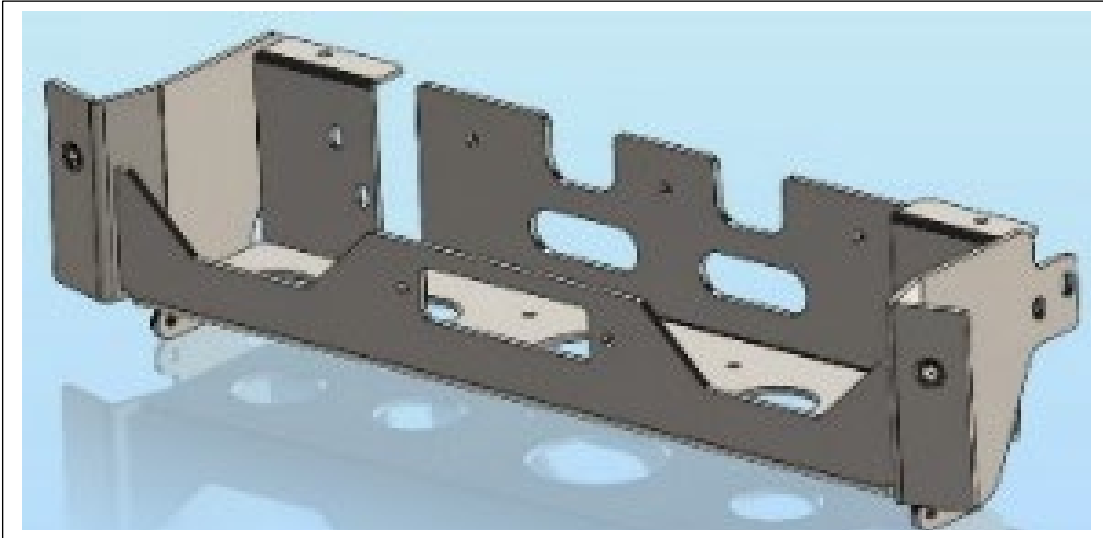
Final wrap check: _____ Date ___/___/___



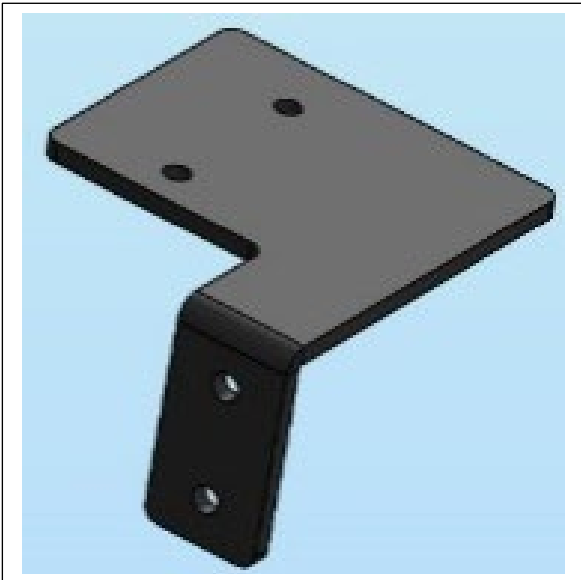
WORLD'S BEST
ALLOY BULLBARS

**Lighter
Stronger
Better!**

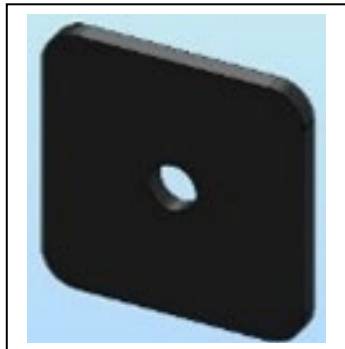
A: 29 Snook St Clontarf QLD 4019
A: PO Box 122 Margate QLD 4019
P: 07 3897 5700
F: 07 3283 1168
E: info@ecb.com.au
W: ecb.com.au
W: customalloy.com.au



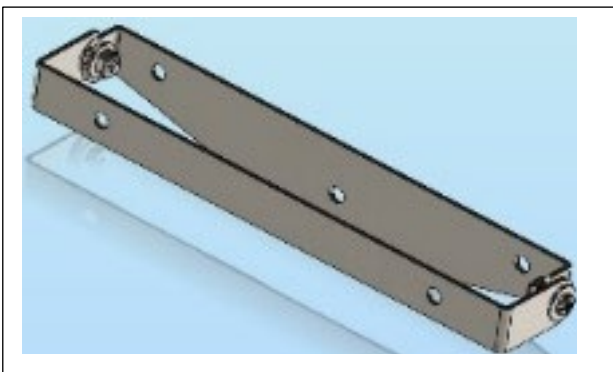
Steel mount



Control box mount



3 – 75 x 75 x 6mm Flat



Number Plate mount assembly

Number plate hinge plate A
Number plate hinge C 40 A3A1

_____/_____
/

Wrapper's initials / Checker initials